






GEO.Map

- 


Geo-coordinates

 - Automatic geocoding of all addresses in SMARTCRM
- 


Area search

 - Search for addresses within a given radius from the original address
- 


Address selection

 - Restriction using the selection criteria
 - Targeted use of filters according to sales strategy and statistical aspects such as the mapping of customer visits depending on time constraints
- 

Address viewing

 - Export of selected addresses and visualization on a map of the online map service Bing Maps
 - Display of additional information such as performance indicators
 - Representation of the sales territories on the map
 - Always available for all employees since no local installation is necessary
- 

Route planning

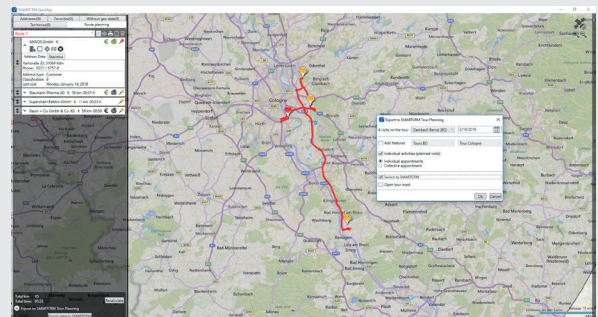
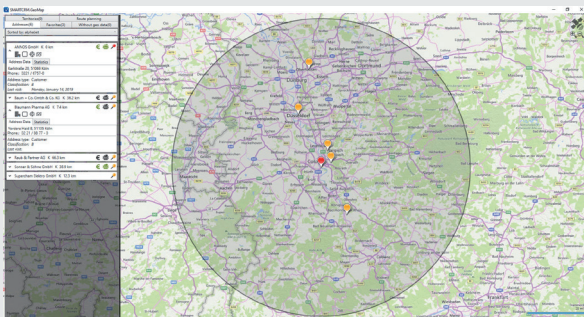
 - Online route planning in Bing Maps
 - Indication of distance, driving time and detailed information about the itinerary
 - Detailed information about itinerary, distance and driving time
 - Display of addresses within a corridor alongside the route
- 

Tour planning

 - Optional when using the module SMARTCRM. TourPlanning: automatic creation of SMARTCRM appointments and planned activities directly from the map

Take the road to success

SMARTCRM shows you the direct path to customers.



See our CRM system live – free of charge and non-binding directly on your screen:
smartcrm.gmbh/en/company/online-demo



Head Office: Georg-Todt-Straße 1, 76870 Kandel, Germany, Ph. +49 7275 98866-0,
 vertrieb@smartcrm.de, www.smartcrm.net

Office in Austria: Friedensstraße 12, 5082 Grödig, Austria, Ph. +43 662 870952-0,
 vertrieb@smartcrm.at, www.smartcrm.at

Office in Switzerland: Juchstrasse 45, 8500 Frauenfeld, Switzerland, Ph. +41 52 770 00-50,
 vertrieb@smartcrm.ch, www.smartcrm.ch