






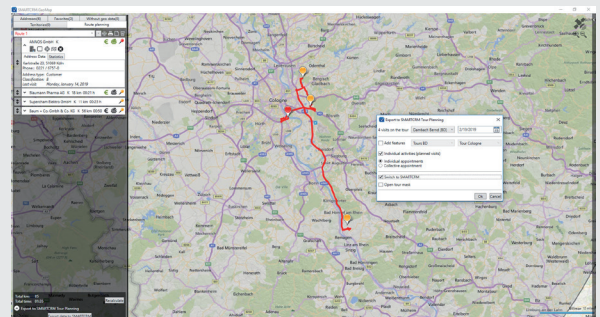
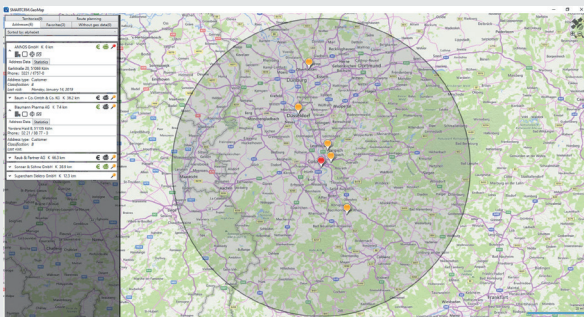


# GEO.Map

- 
**Geo-coordinates**
  - Automatic geocoding of all addresses in SMARTCRM
- 
**Area search**
  - Search for addresses within a given radius from the original address
- 
**Address selection**
  - Restriction using the selection criteria
  - Targeted use of filters according to sales strategy and statistical aspects such as the mapping of customer visits depending on time constraints
- 
**Address viewing**
  - Export of selected addresses and visualization on a map of the online map service Bing Maps
  - Display of additional information such as performance indicators
  - Representation of the sales territories on the map
  - Always available for all employees since no local installation is necessary
- 
**Route planning**
  - Online route planning in Bing Maps
  - Indication of distance, driving time and detailed information about the itinerary
  - Detailed information about itinerary, distance and driving time
  - Display of addresses within a corridor alongside the route
- 
**Tour planning**
  - Optional when using the module SMARTCRM. TourPlanning: automatic creation of SMARTCRM appointments and planned activities directly from the map

## Take the road to success

SMARTCRM shows you the direct path to customers.



See our CRM system live – free of charge and non-binding directly on your screen:  
[smartcrm.gmbh/en/company/online-demo](http://smartcrm.gmbh/en/company/online-demo)



Head Office: Georg-Todt-Straße 1, 76870 Kandel, Germany, Ph. +49 7275 98866-0,  
 vertrieb@smartcrm.de, www.smartcrm.com

Office in Austria: Mayrwiesstraße 11, 5300 Hallwang, Austria, Ph. +43 662 870952-0,  
 vertrieb@smartcrm.at, www.smartcrm.at

Office in Switzerland: Juchstrasse 45, 8500 Frauenfeld, Switzerland, Ph. +41 52 770 00-50,  
 vertrieb@smartcrm.ch, www.smartcrm.ch